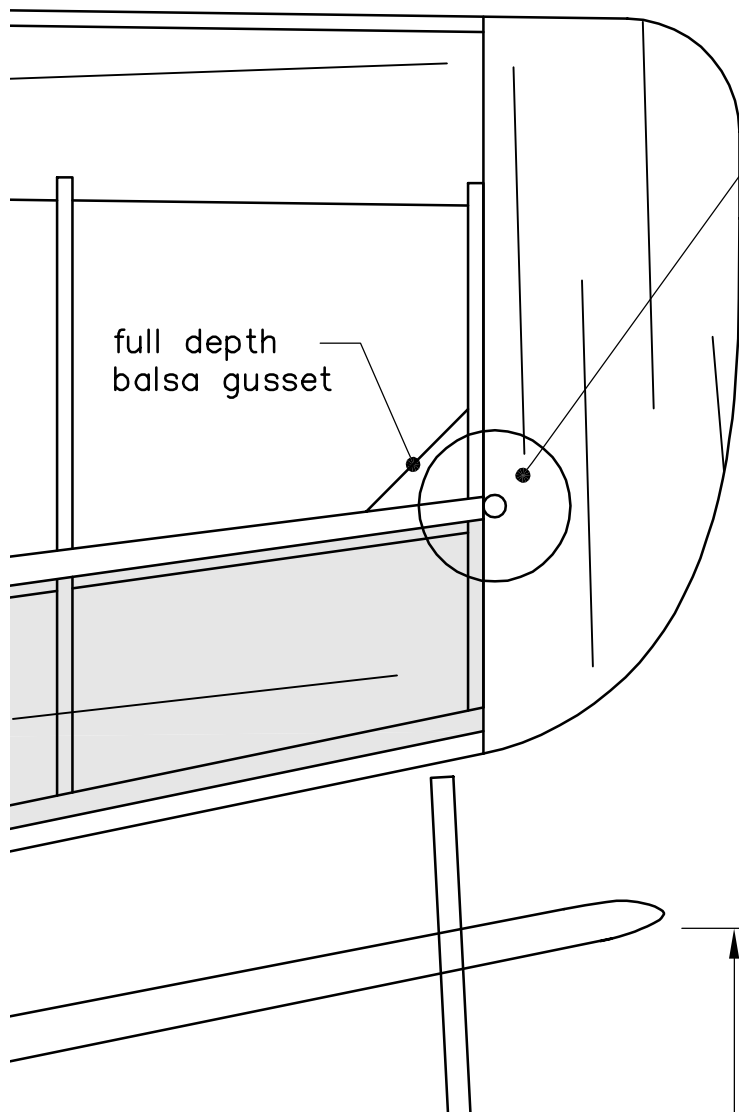
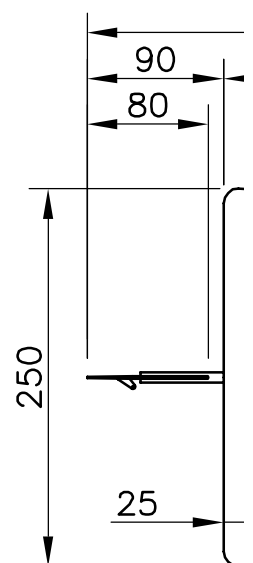
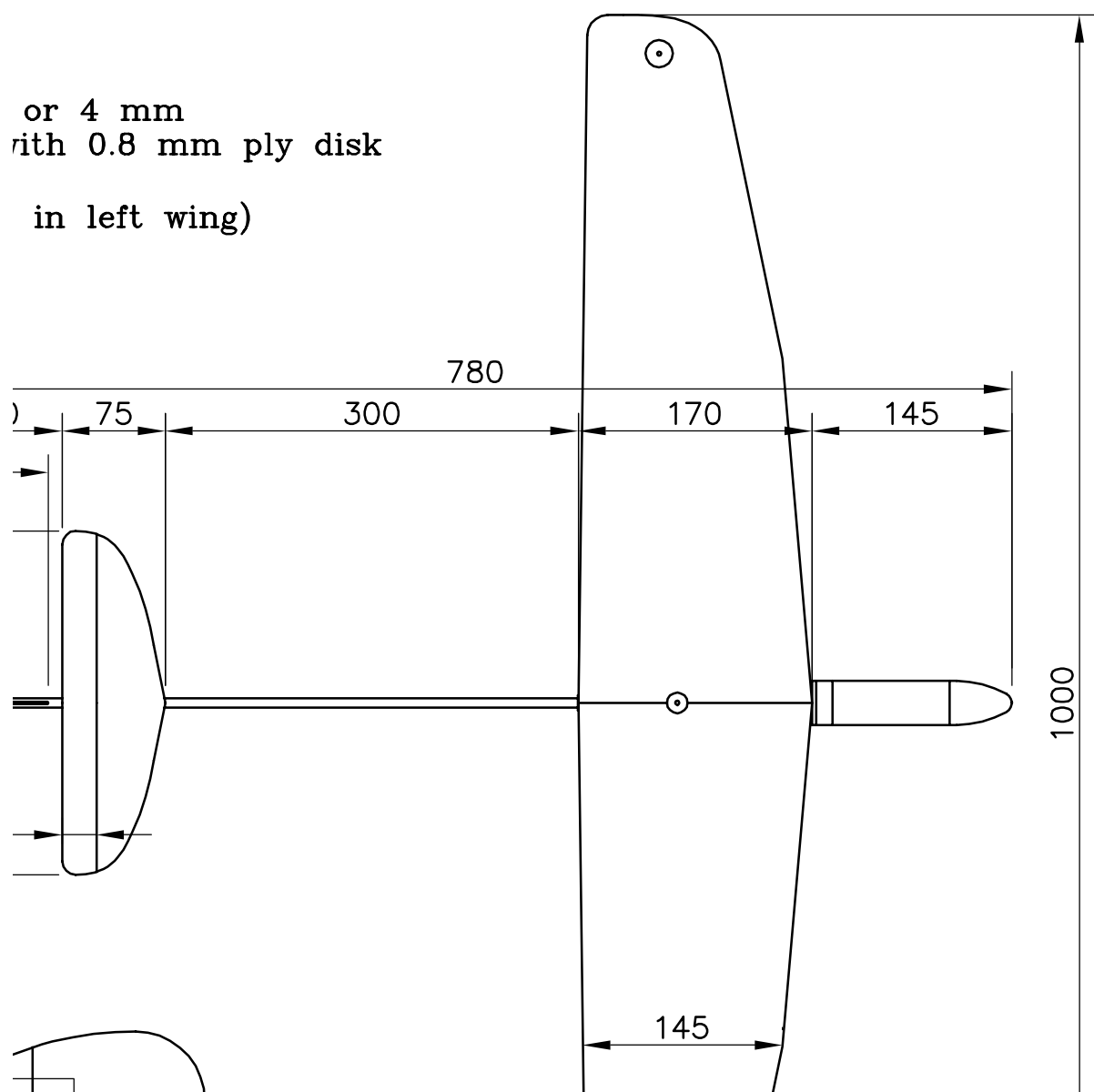


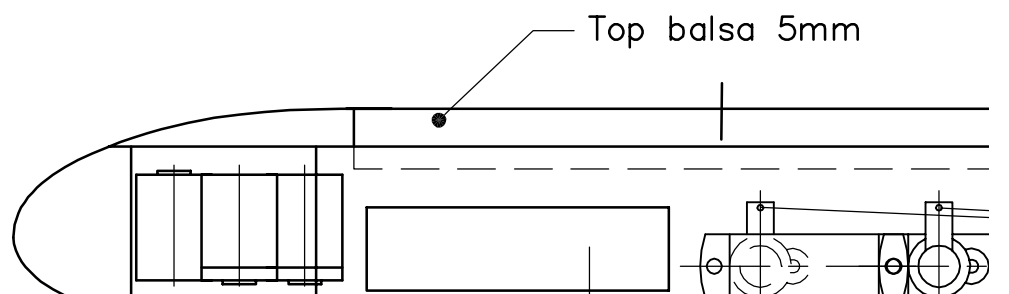
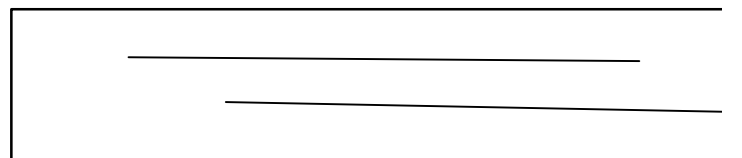
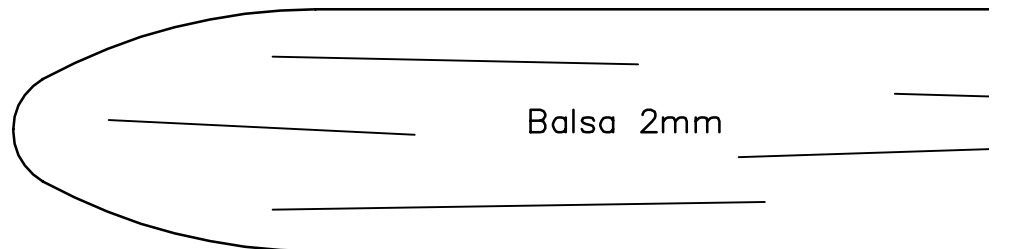
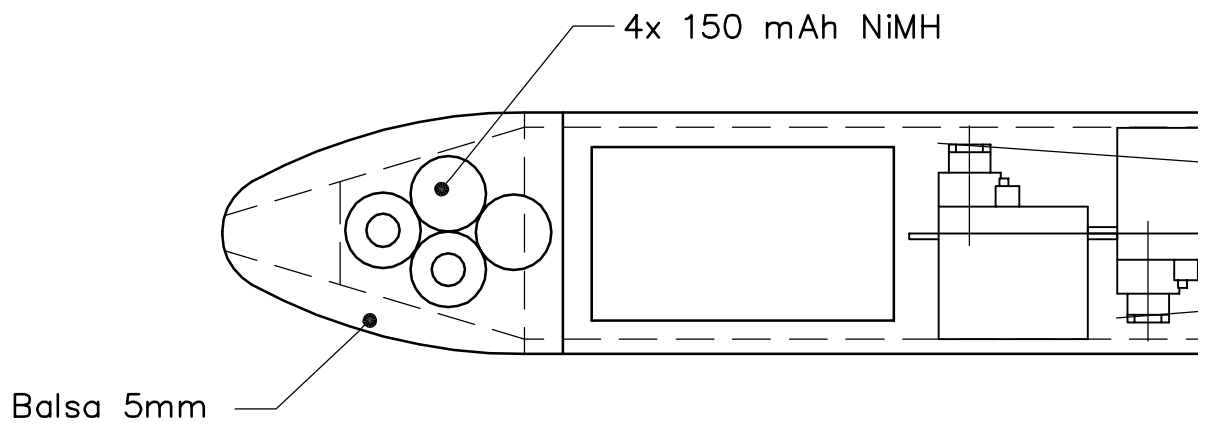
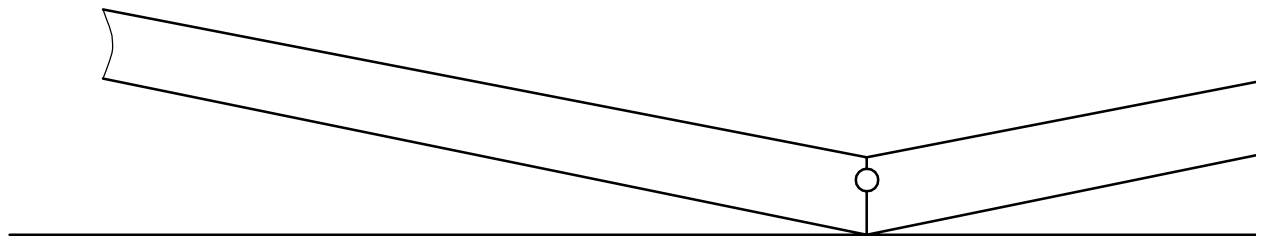
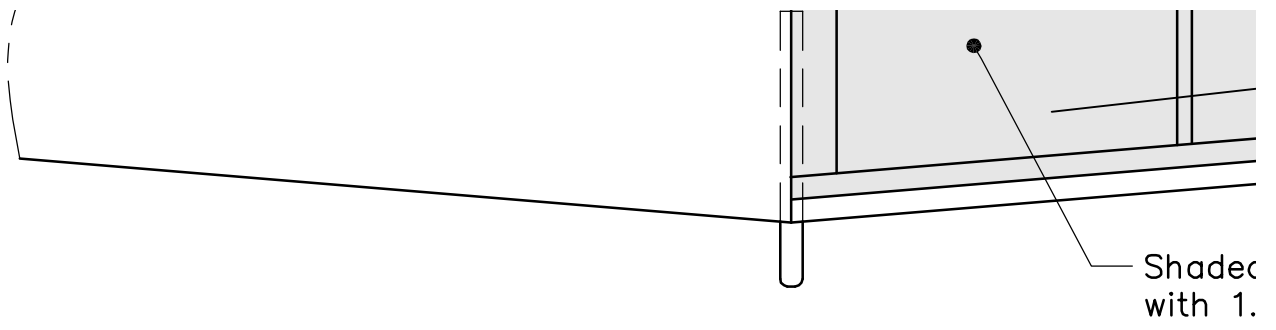
Trailing edge insert 2x1 spruce (optional)

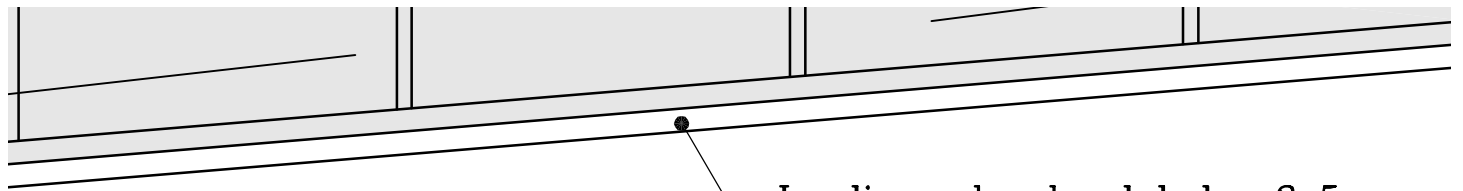


Launching peg carbon rod 3 or
Top and bottom reinforced with
diameter 20 mm
(Right handed, launching peg in



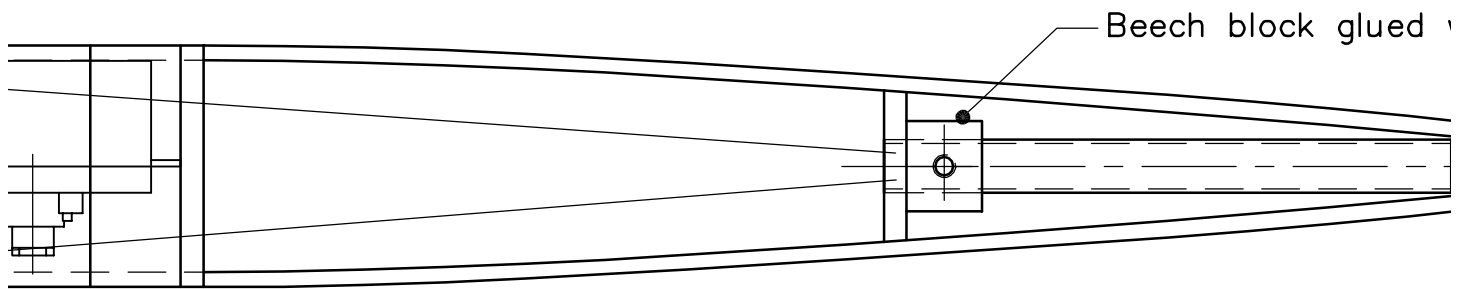
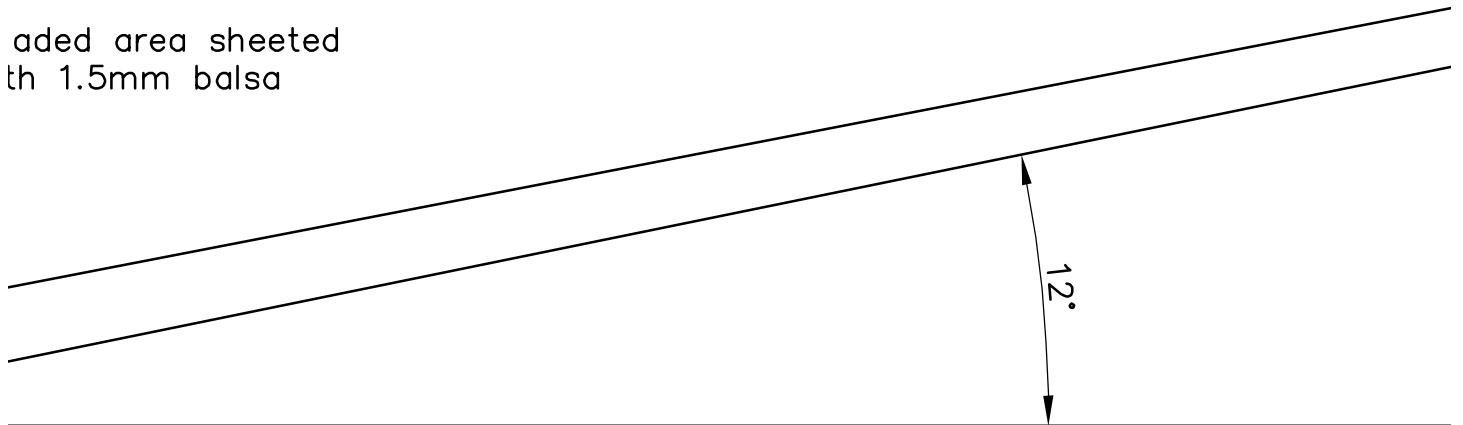




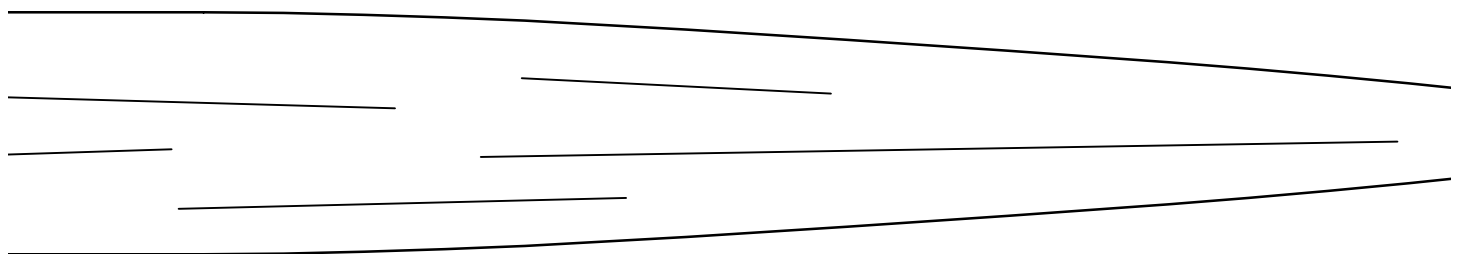


Leading edge hard balsa 3x5

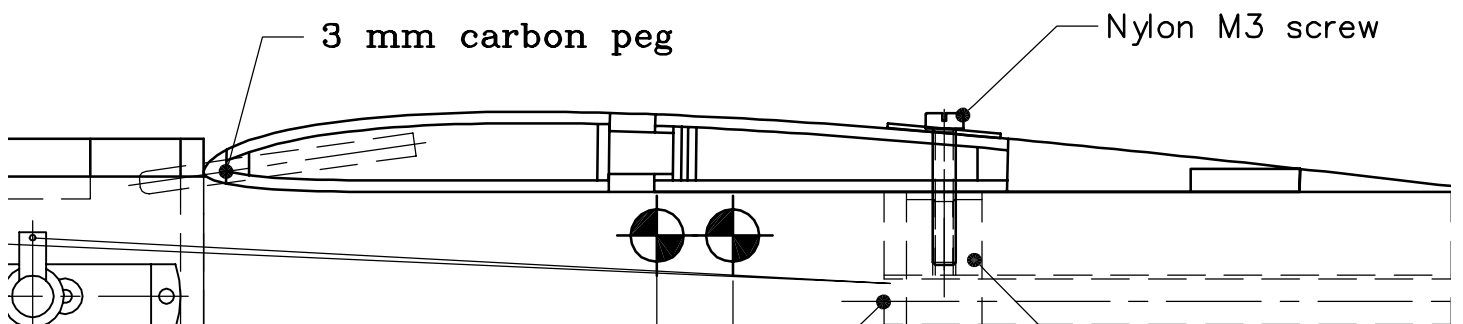
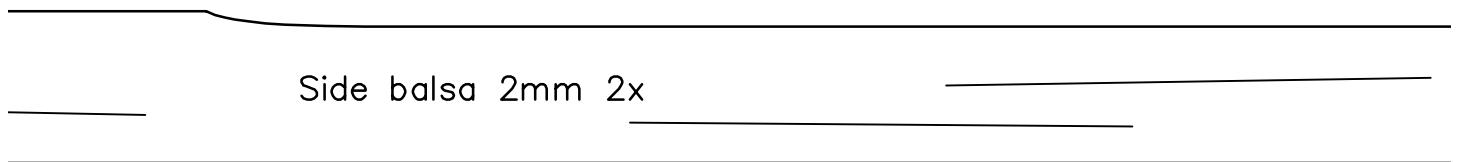
added area sheeted
th 1.5mm balsa



Beech block glued

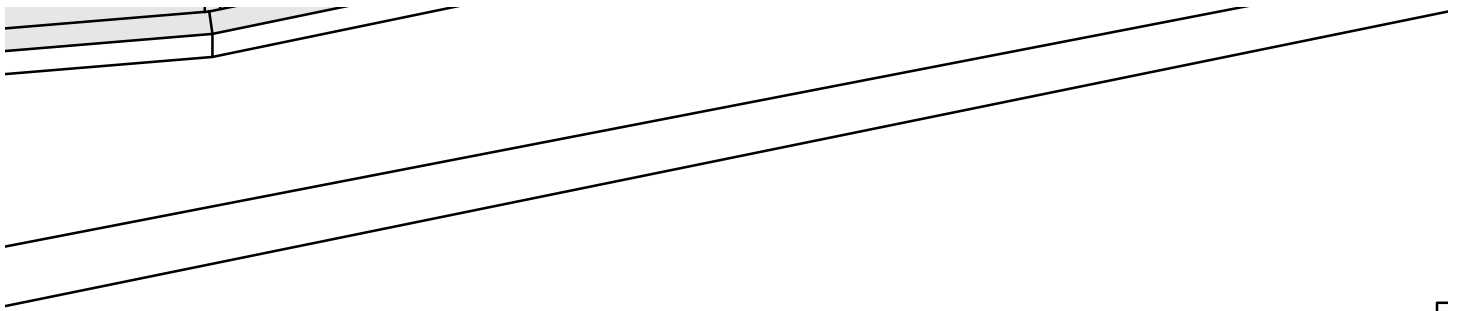


Side balsa 2mm 2x



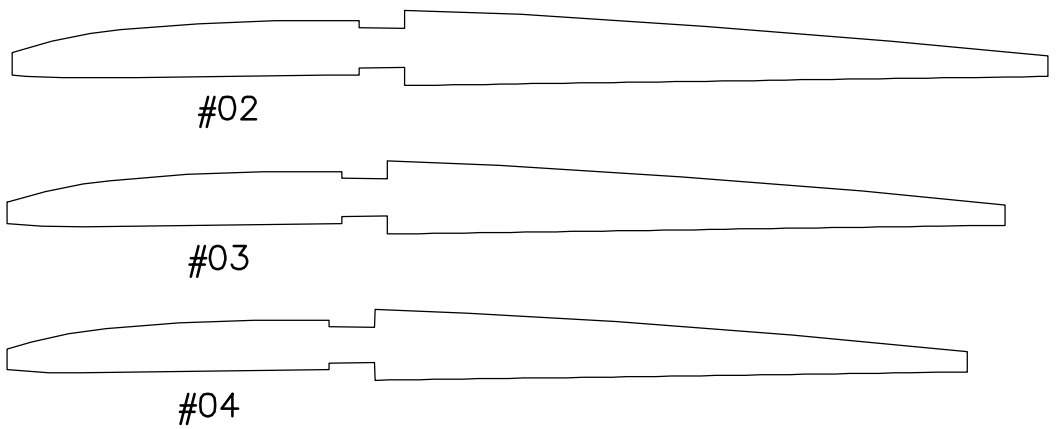
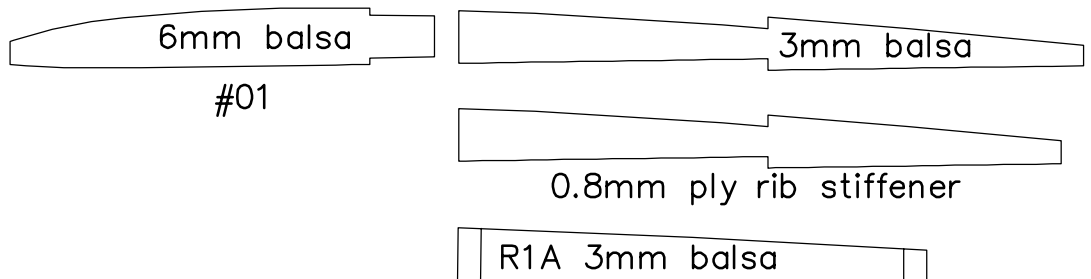
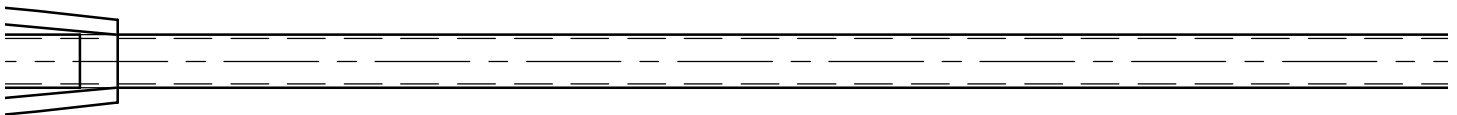
3 mm carbon peg

Nylon M3 screw



Dihedral Brace 3mm ply

ued with epoxy



100

Jig for setting R1
dihedral angle

Balsa 2mm

SkyShark 2P or 3P or similar

#05

#06

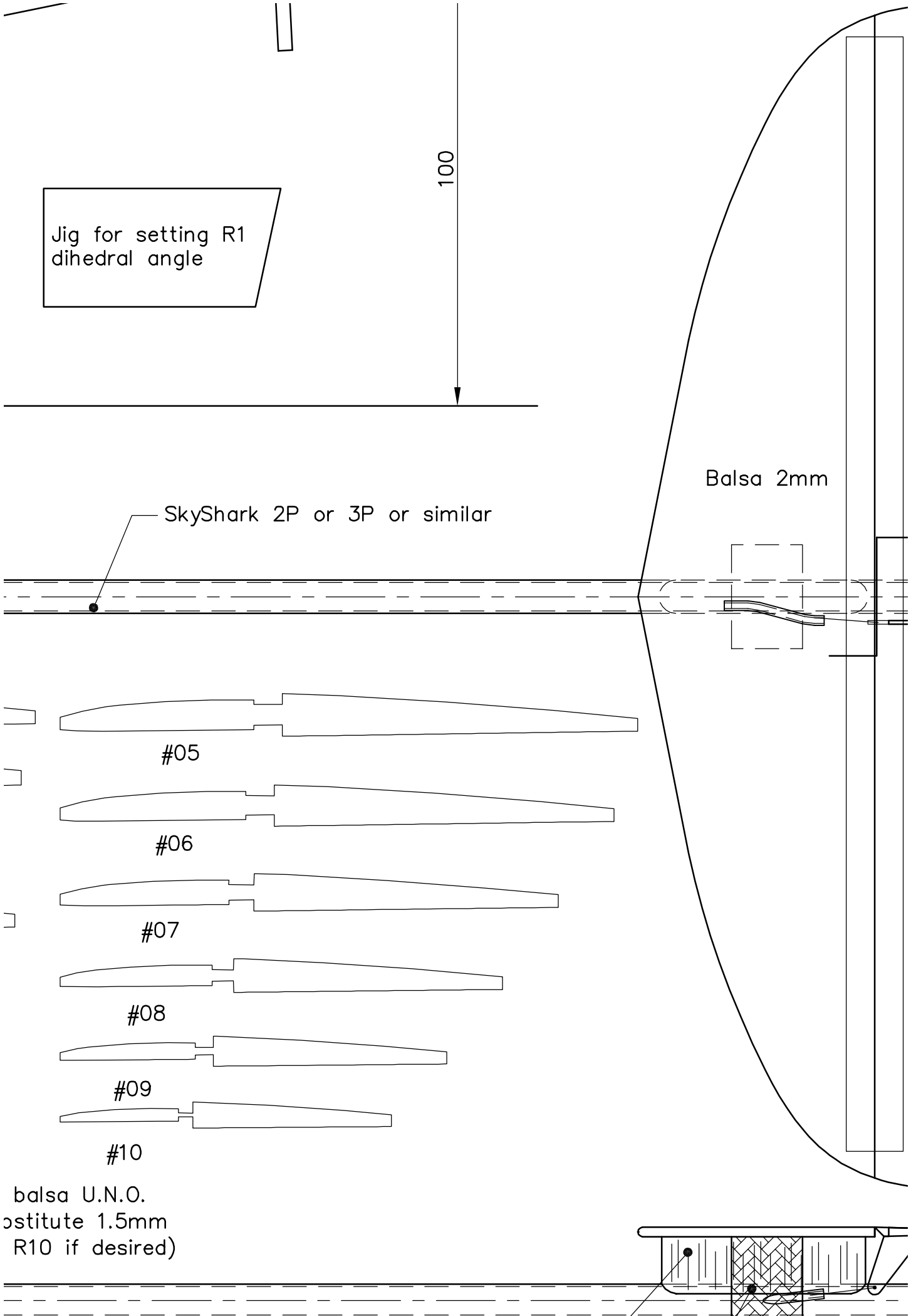
#07

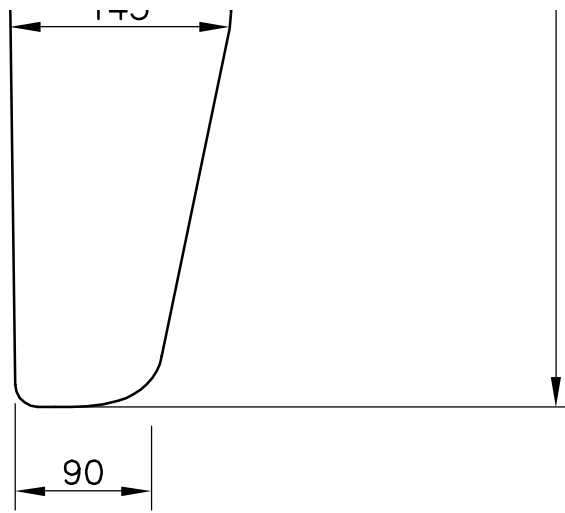
#08

#09

#10

balsa U.N.O.
stitute 1.5mm
R10 if desired)





Plastic tube

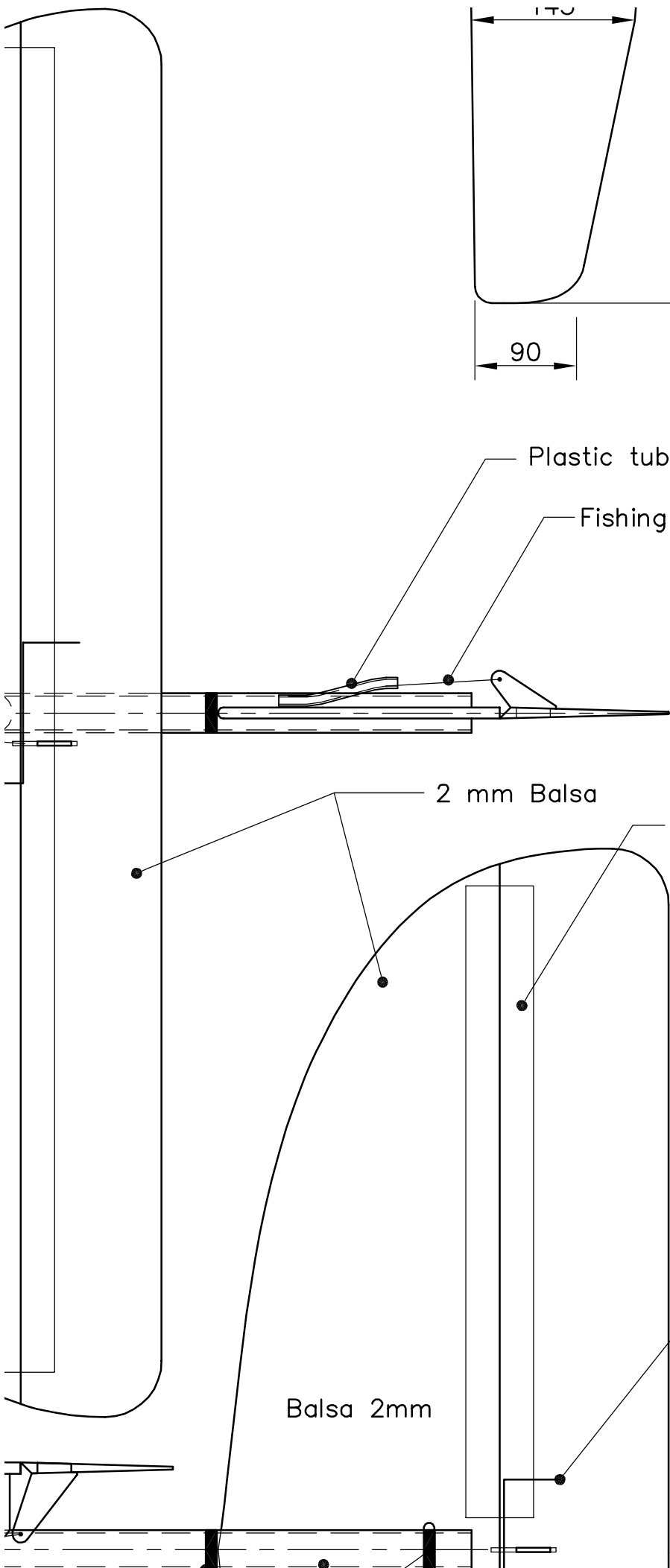
Fishing line

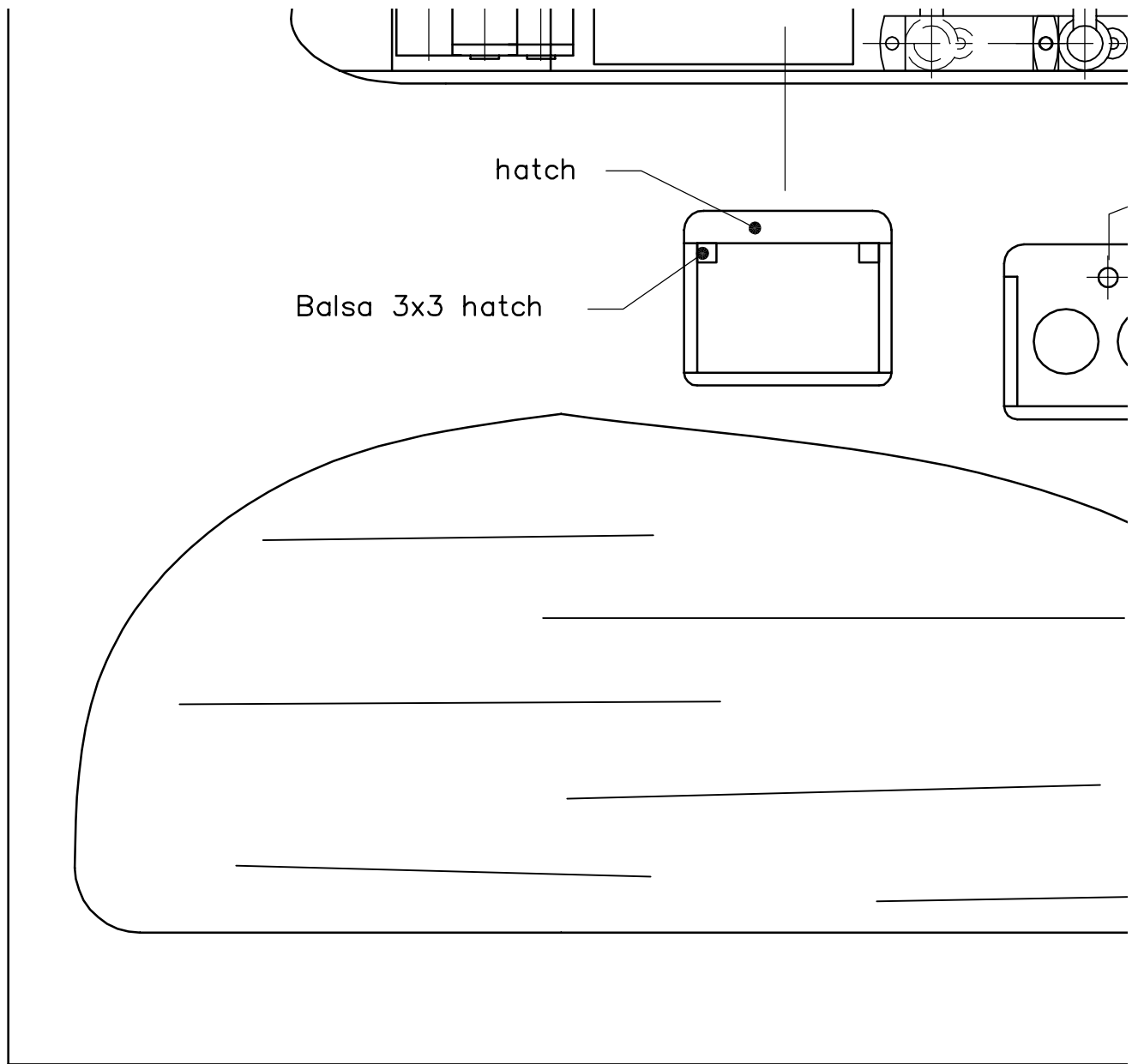
2 mm Balsa

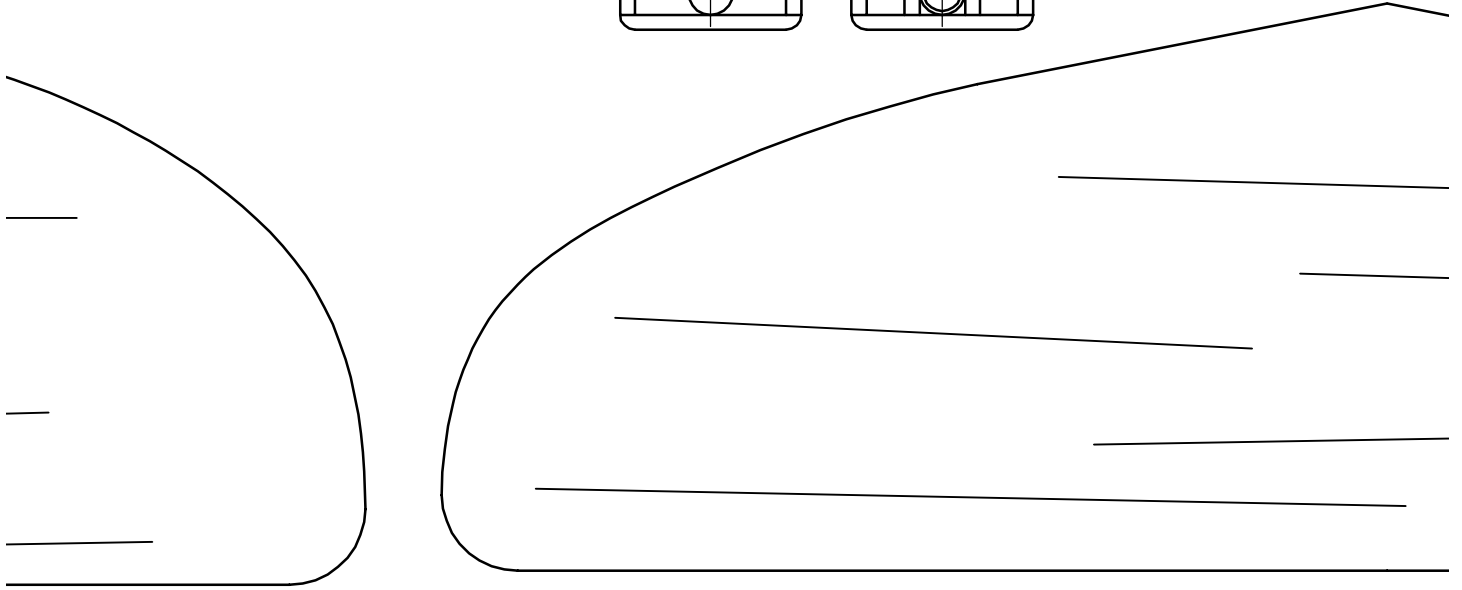
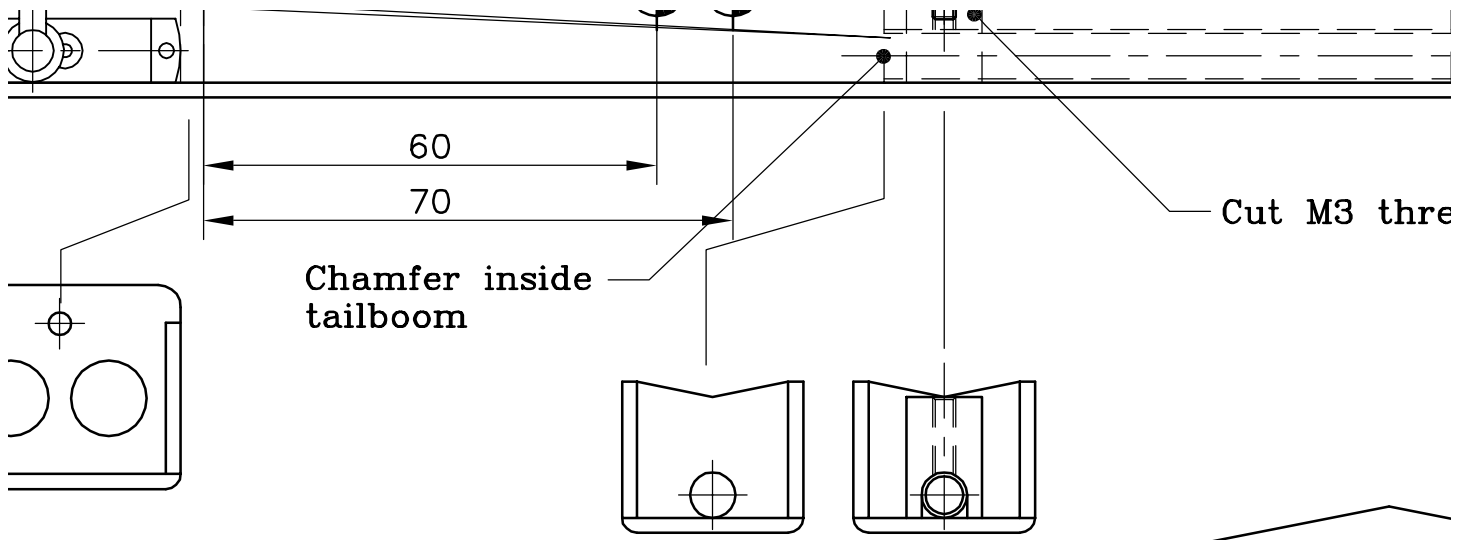
Tape Hinge

Torsion spring
0.3 mm
spring steel

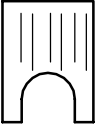
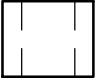
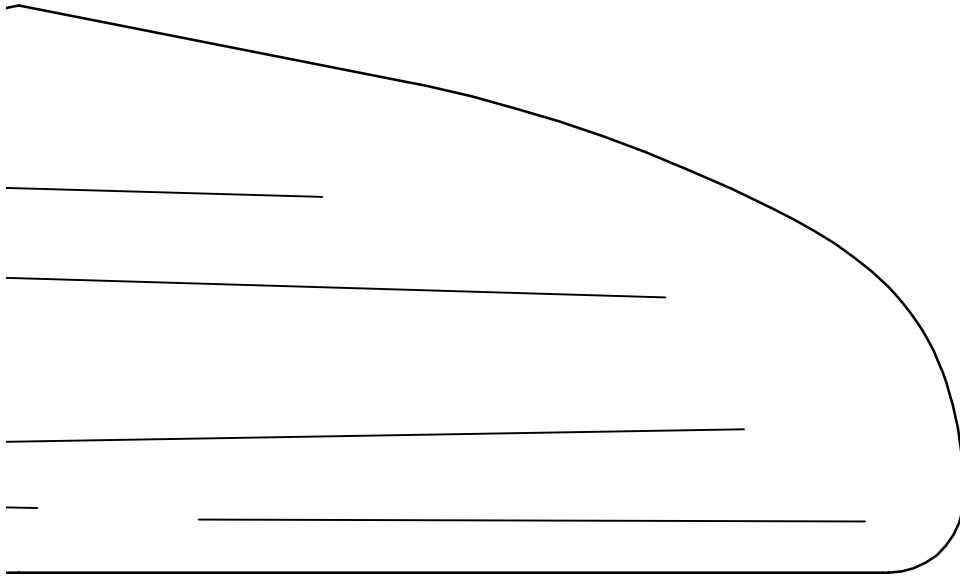
Balsa 2mm



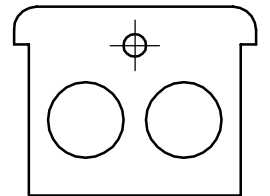




thread in block



Beech block

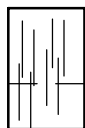


Ply 3mm

6mm Balsa Hard

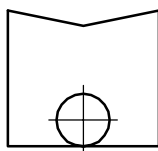
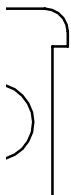
Kevlar or glas cloth reinforcement

Wrap with kevlar fiber or strong saturate with t



Make slot in

block 10x12 L=16



Ply 3mm



Control horn
0.8mm ply

PE

DESIGN

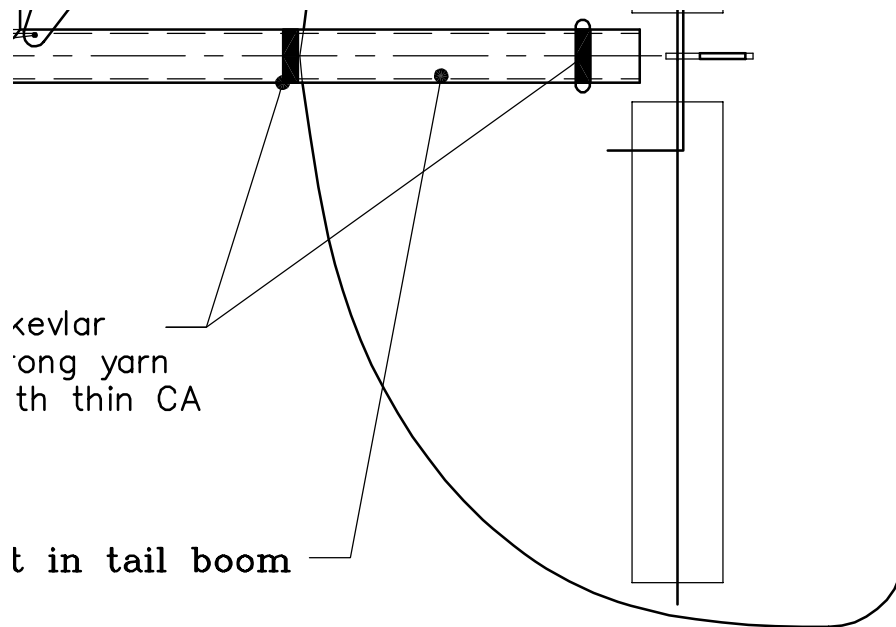
BUILD U

CHECK

APPR.

DRAWING

WWW.F



PROVISIONAL DRAWING

SIGN FRANS BAL	SPAN 1000MM LENGTH 780MM WEIGHT APPROX. 140 GRAM		
BUILT UP WING STEVE BAGE	<div>MiMi</div> <div>Build Up Wing</div> <div>DRAWING FOR PERSONAL NON COMMERCIAL USE ONLY.</div>		
CHECK			
PR.			
DRAWING FRANS BAL		DWG No. MiMi_Buildup.dwg	REV.
WW.F3K.NL	SCALE 1 : 1	METRIC DRAWING	SHEET 1/1