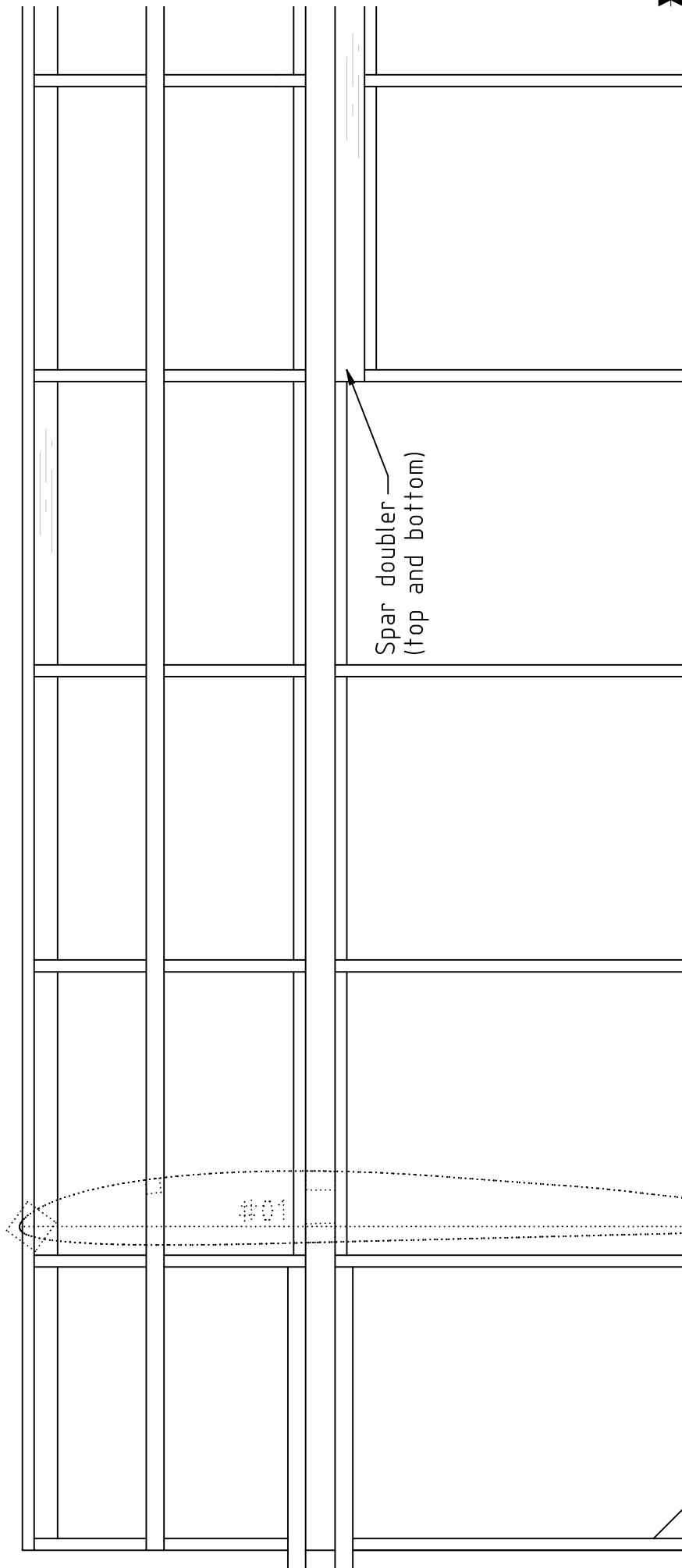
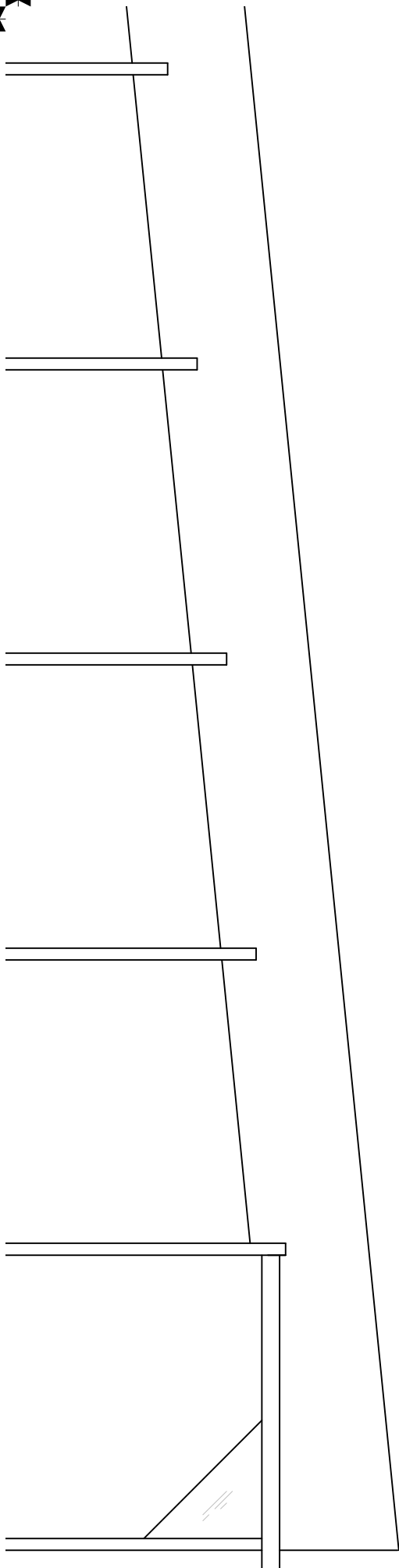


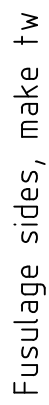
Grid (1 , 1)

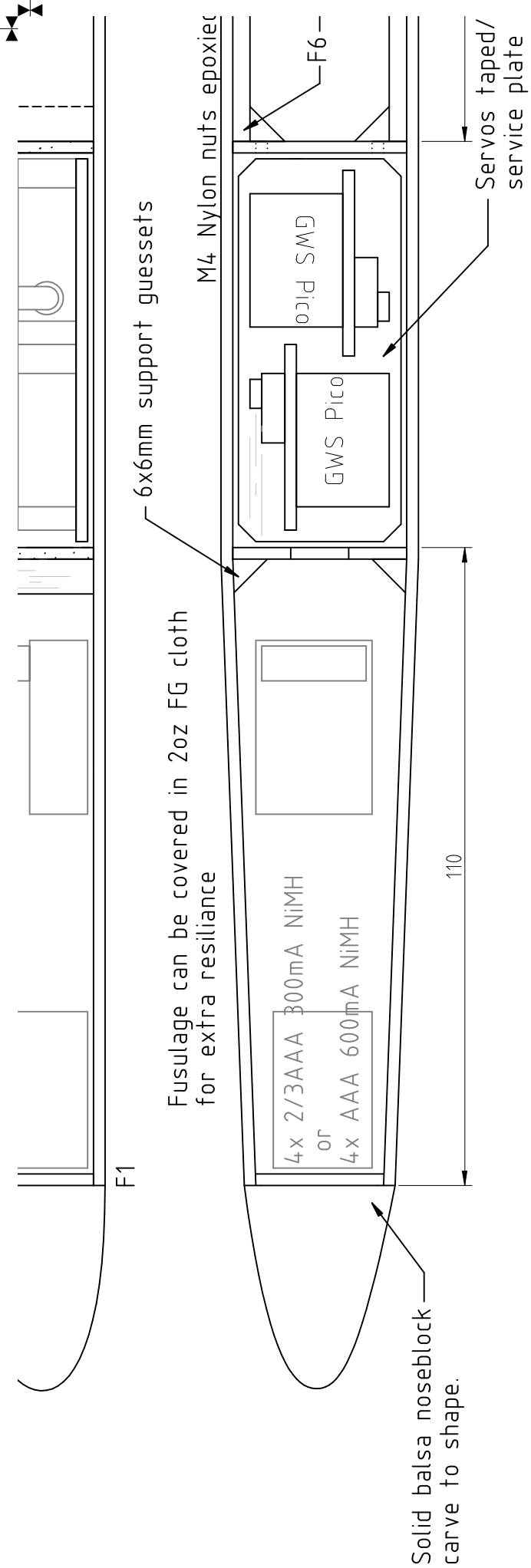


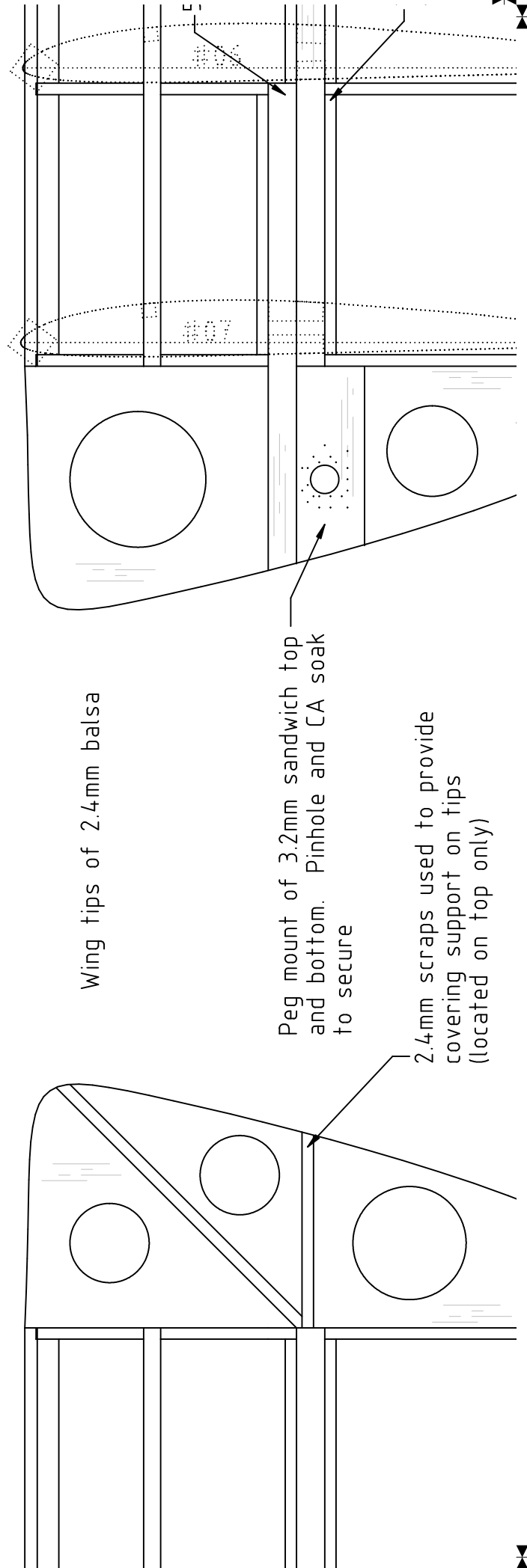
Spar doubler
(top and bottom)

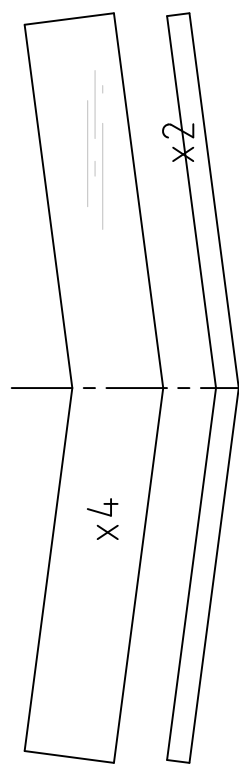
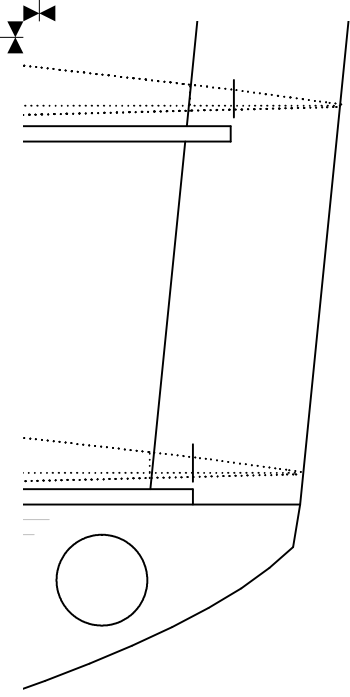
#01



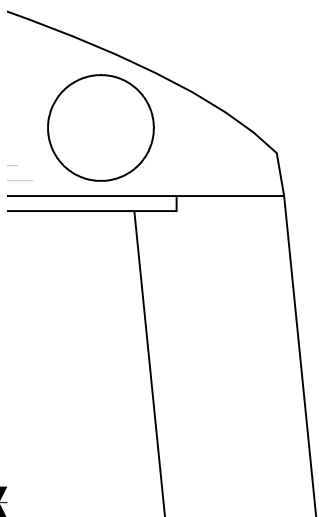




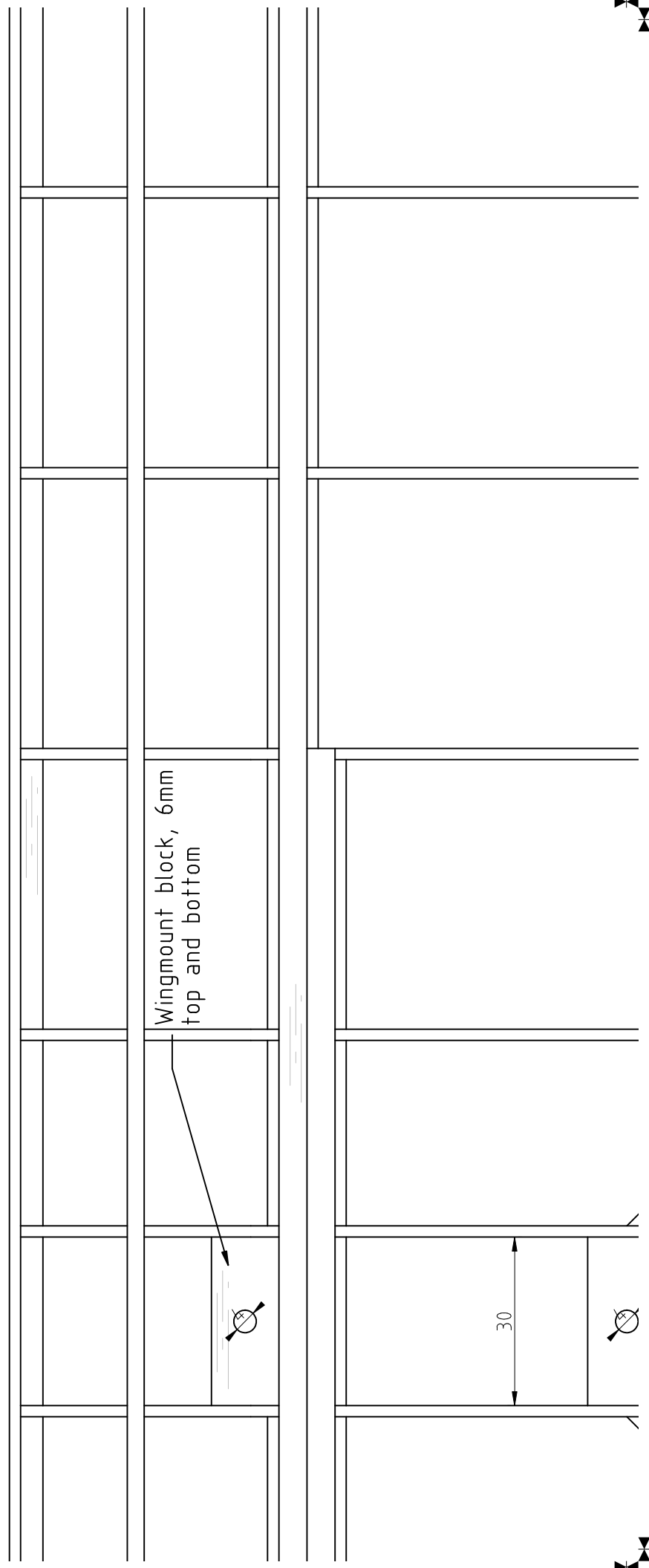




Use these braces to set the tip angle at 15°. Use the center brace as a spar cutting guide, the brace should butt against the rib sides.

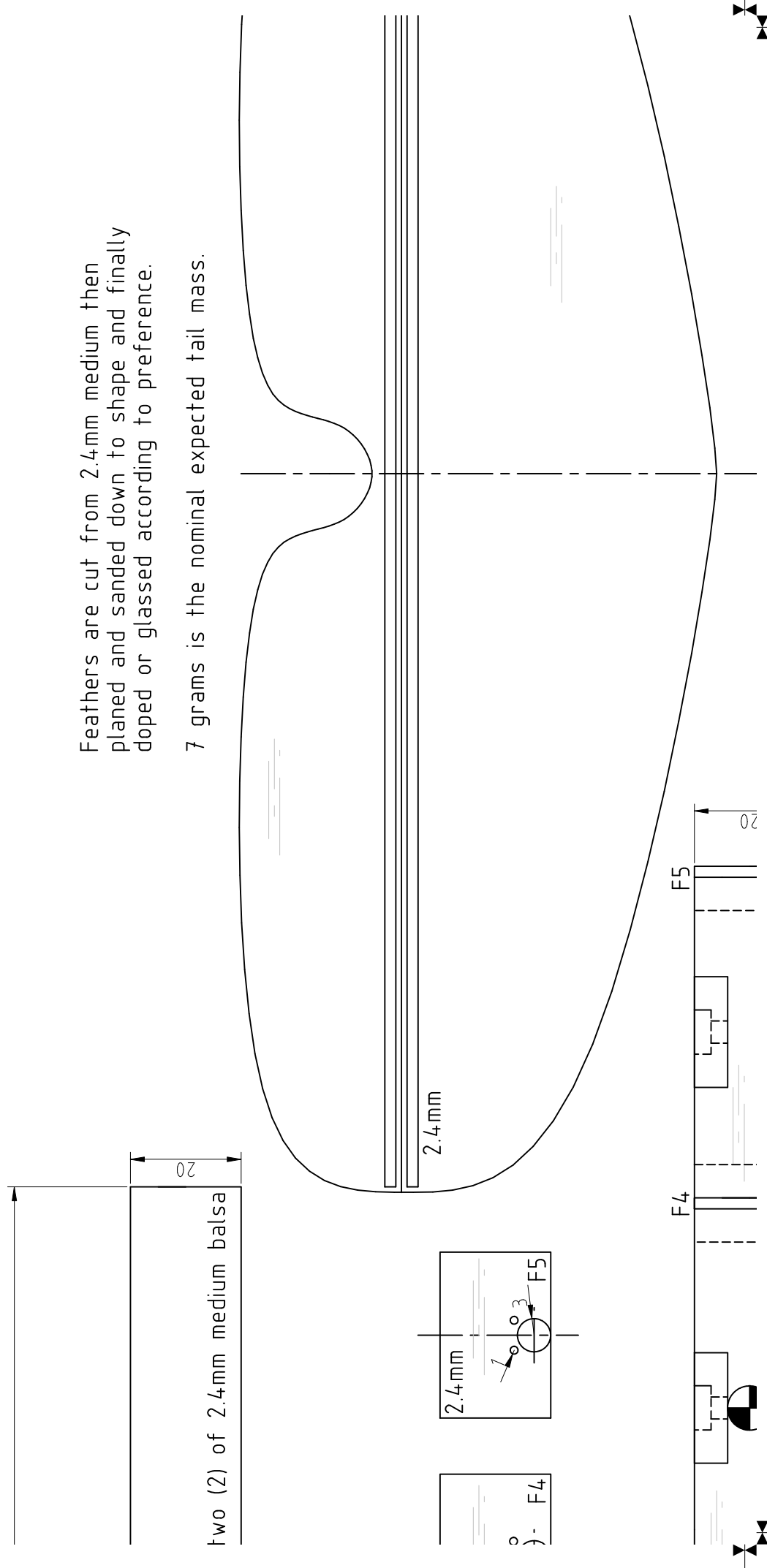
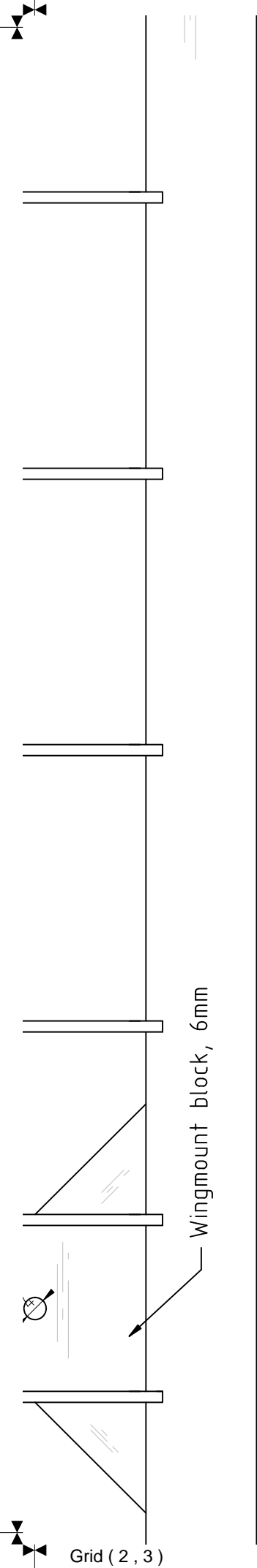


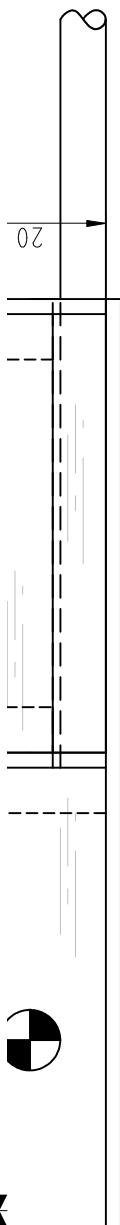
Grid (2 , 2)



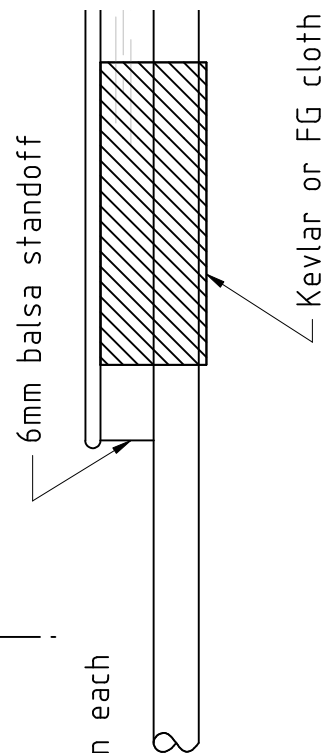
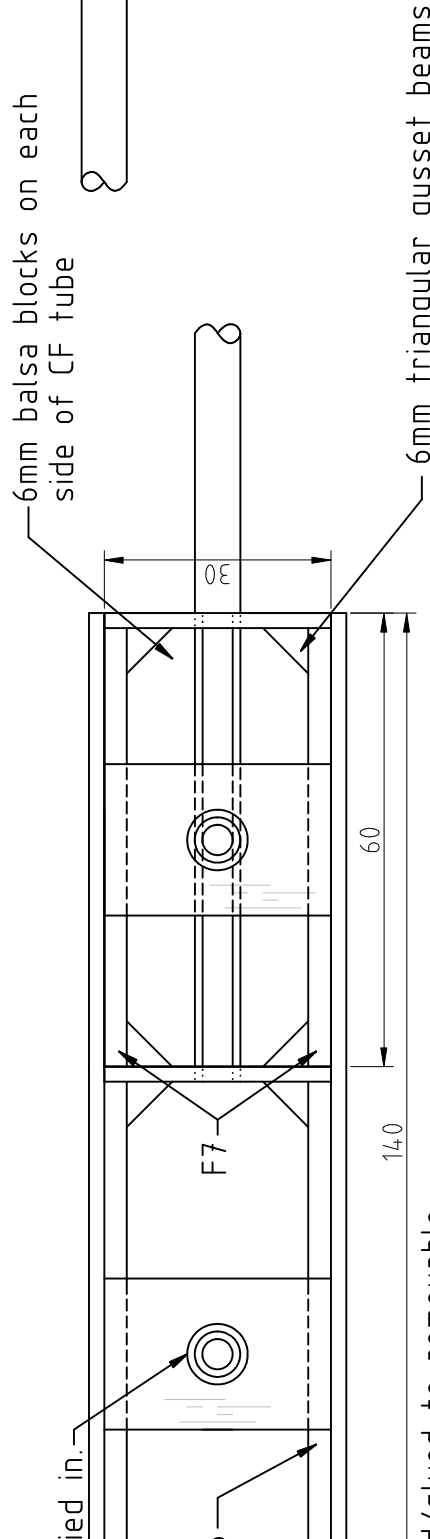
Wingmount block, 6mm top and bottom

30

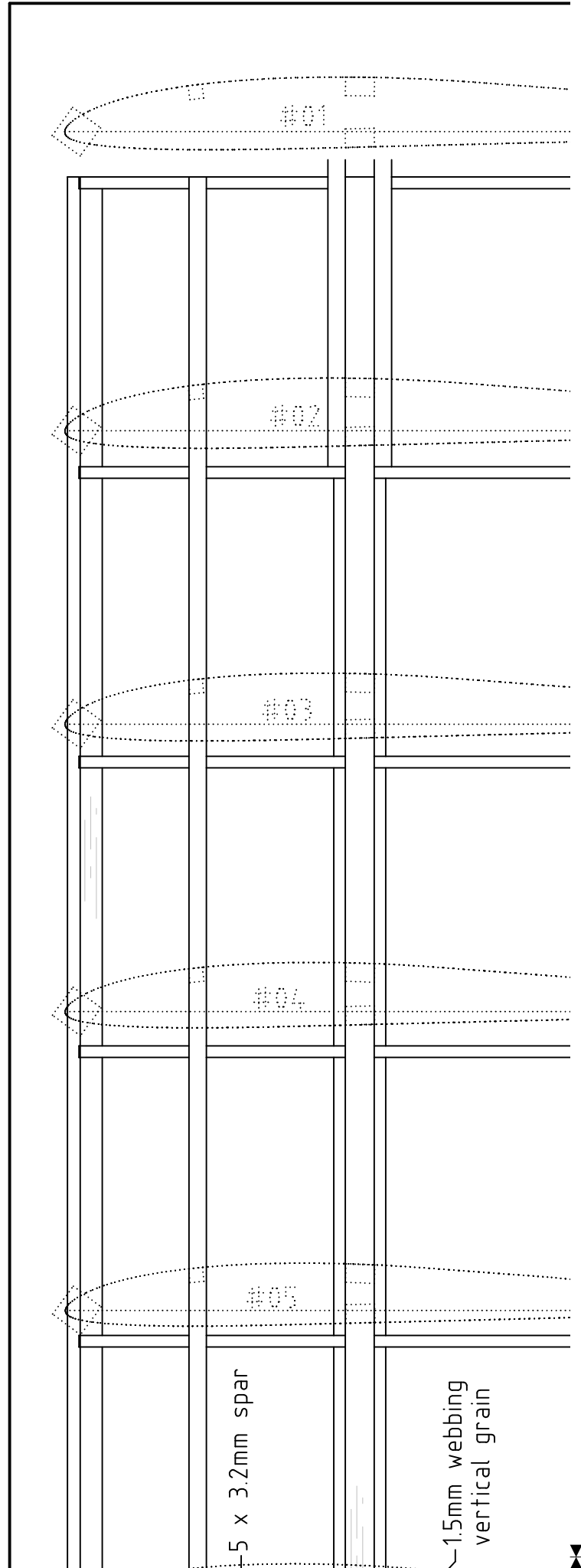


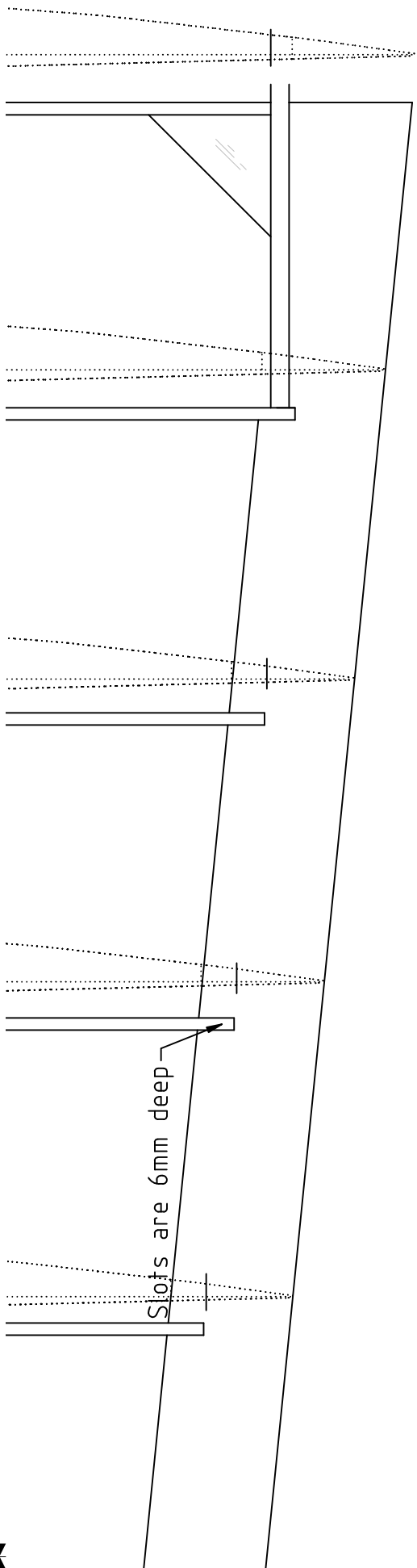


Grid (2 , 4)

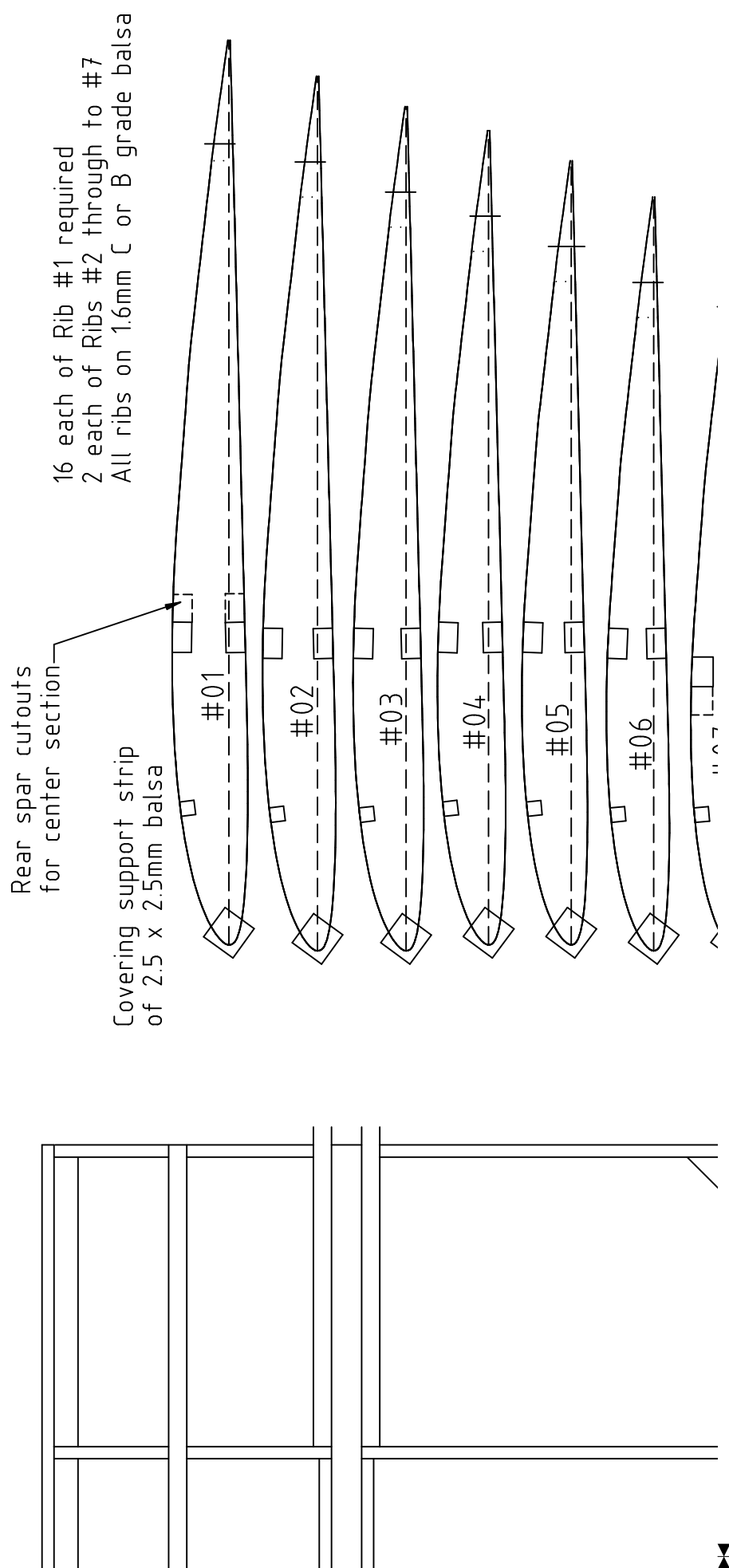


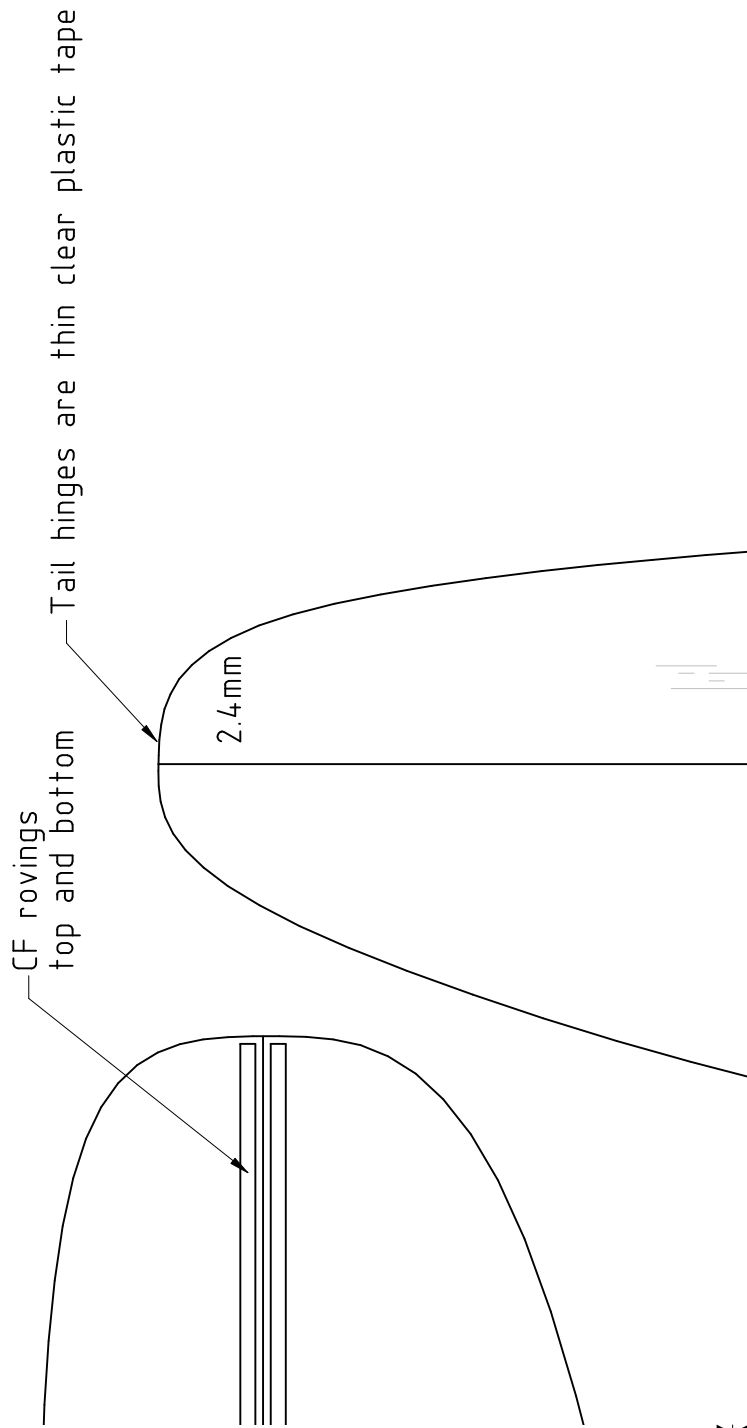
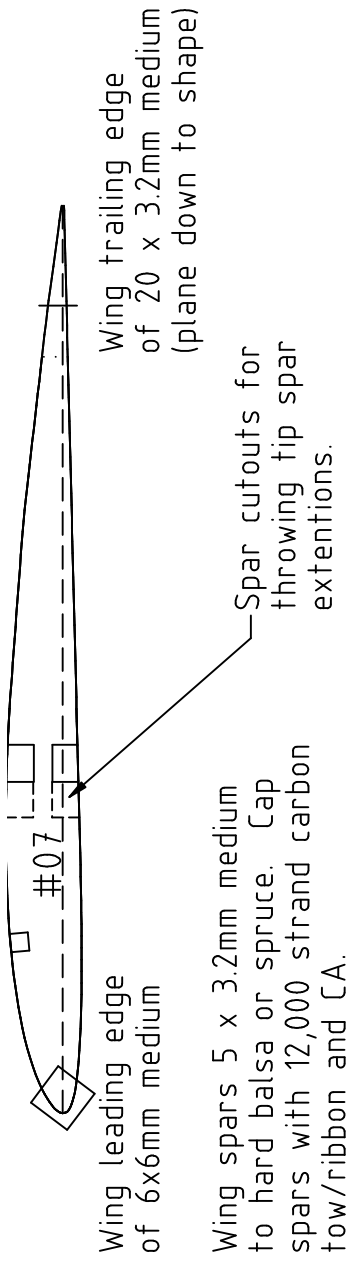
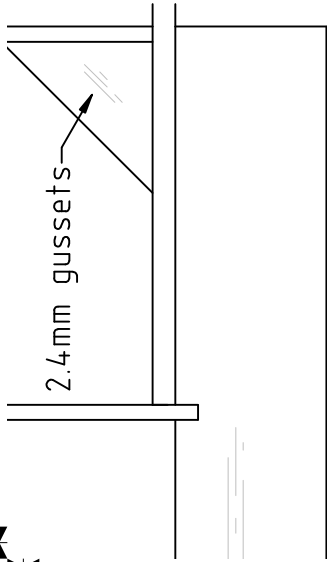
d/glued to removable

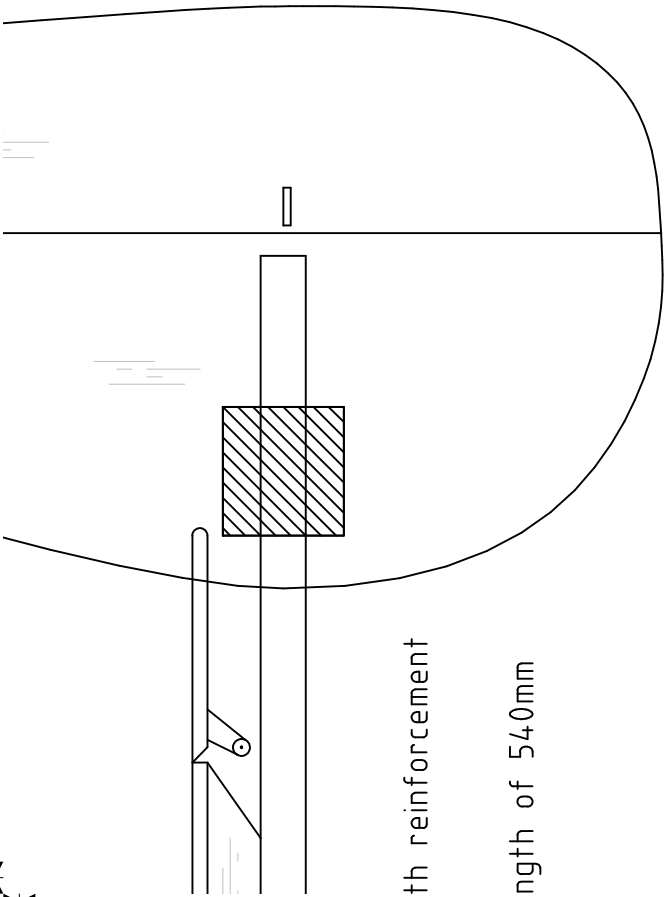




Grid (3 , 2)







Grid (3 , 4)

QuickFlick-11 DLG

Target Weight: 170-190g / 6.35oz
Wing span: 1300mm / 49"
Chord: 150mm / 6"

Wing area: 16.8dm.sq / 1.8 ft.sq

Revision: 05,2005031401

Copyright © Paul L Daniels 2005
This plan can only be sold by PLDaniels.



<http://www.pldaniels.com/flying>
pldaniels@pldaniels.com